

SCAVENGER HUNT

Creature Features

Animals come in a remarkable variety of shapes, sizes, and colors.

Find an animal at the Zoo that:



Is red



Is green



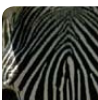
Is blue



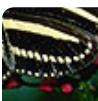
Is brown



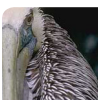
Has spots



Has stripes



Has spots and stripes



Has feathers



Has scales



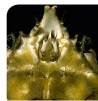
Has a shell



Has whiskers



Is covered in fur



Has no fur at all



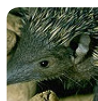
Has pincers



Has many legs



Has a long tail



Has spikes, spines, or quills



Is bigger than you



Is smaller than you



Could fit in the palm of your hand

*Make it more challenging by finding animals not pictured above.



Something to Talk About. What characteristics make you unique? What characteristics do you share with some of the animals at the Zoo? Which animals are similar to you? Which are different from you?